

SCOPTTEL CentOS 6.X BootDisk Installation Guide

Contents

SCOPTTEL CentOS 6.X BootDisk Installation Guide	1
Introduction	1
CentOS Linux	1
SCOPTTEL	1
Minimum Hardware Recommendations	1
Where to Download the Installation	2
Installation Options:	2
Boot Media Installation	2
Option 1 : DVD	2
Option 2 : USB	2
Option 3 : Virtual Machine	3
Xen Requirements	4
BEFORE YOU BEGIN!	6
Installation Procedure	6
Post Installation	16

Introduction

CentOS Linux

The CentOS Linux distribution is a stable, predictable, manageable and reproducible platform derived from the sources of Red Hat Enterprise Linux (RHEL).

SCOPTTEL

The SCOPTTEL applications suite is a complete IP PBX management system used to manage the Asterisk open-source toolkit. SCOPTTEL's intuitive and comprehensive graphical interface takes full advantage of all the proven features of this platform. Recognized globally by VoIP professionals SCOPTTEL brings the benefits of Asterisk and other evolving open standards while controlling costs. In addition to offering unparalleled ease of use SCOPTTEL extends Asterisk's functionalities to offer a complete unified communications system.

- Previous versions of SCOPTTEL were either based on CentOS versions 4 or 5
- However these versions have limited lifecycle support and it was necessary for SCOPSERV International to Release an installation ISO based on CentOS version 6.X

End of Lifetime (EOL) Dates				
	CentOS4 ¹	CentOS5	CentOS6	CentOS7
Full Updates ²	February 29th, 2009	Q1 2014 ³	Q2 2017	Q4 2020
Maintenance Updates ⁴	February 29th, 2012	March 31st, 2017	November 30th, 2020	June 30th, 2024

- As of 2016-10-25 the current version of SCOPTTEL ISO is Version: 6 - Platform: CentOS 6.8 - 64 bit (x86_64)

Minimum Hardware Recommendations

- Quad Core 64 bit CPU x86_64 architecture

- 4 GB RAM
- 60 GB Hard Drive or Virtual Machine Container

Where to Download the Installation

link: <http://download.scopserv.com/iso/>

Make sure you download the version 6 release

Installation Options:

- Burn to DVD and boot to DVD drive on a standalone server
- Copy ISO to USB key using [Rufus](#) and boot to USB on a standalone server
- Install the ISO using a Virtual Machine Container

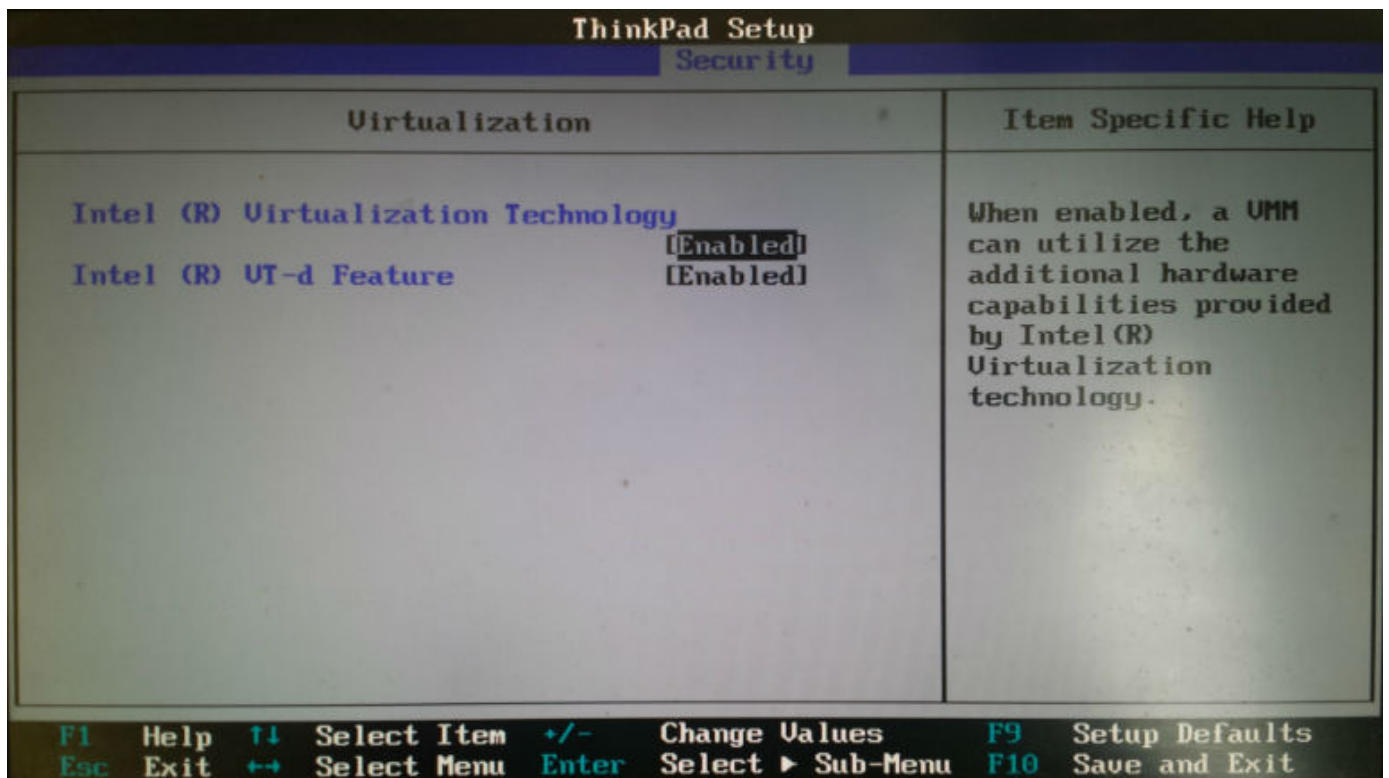
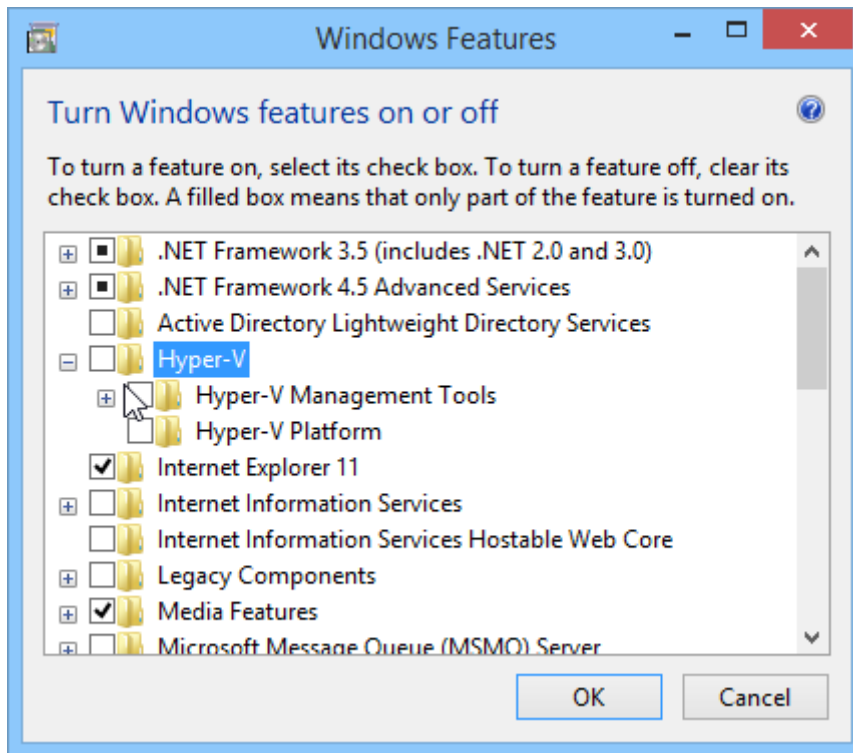
Boot Media Installation

Option 1 : DVD

1. Once you have downloaded the ISO file from the SCOPSERV website use your favourite software to burn the image to a bootable DVD
2. Attach a DVD drive to the target server
3. Edit the server's BIOS to boot from DVD

Option 2 : USB

1. Once you have downloaded the ISO file from the SCOPSERV website use [Rufus](#) to make a bootable USB drive
2. Insert the USB drive into the target server
3. Edit the server's BIOS to boot from USB



Xen Requirements

- You must choose Other install media and select the SCOPSERV ISO location
- Automatic Installation method will not work in Xen, so you must use Manual (Graphic) Mode.



Select a VM template



Template

Name
Installation Media
Home Server
CPU & Memory
Storage
Networking
Finish

Search...



Name	Category
Ubuntu Precise Pangolin 12.04 (32-bit)	Ubuntu
Ubuntu Precise Pangolin 12.04 (64-bit)	Ubuntu
Ubuntu Trusty Tahr 14.04	Ubuntu
Ubuntu Xenial Xerus 16.04	Ubuntu
Citrix XenApp on Windows Server 2008 (32-...	Citrix
Citrix XenApp on Windows Server 2008 (64-...	Citrix
Citrix XenApp on Windows Server 2008 R2 (...	Citrix
Other install media	Misc
Before Revert	Snapshots
Fresh Install	Snapshots
Fresh Install 57	Snapshots
ScopCOMM Installed	Snapshots

Template details

If the operating system you plan to use is not listed, you may be able to install it by selecting this template. We recommend that only advanced users attempt to use this template, and you should note that our products have been tested running only the supported distributions and specific versions covered by the standard supplied templates.

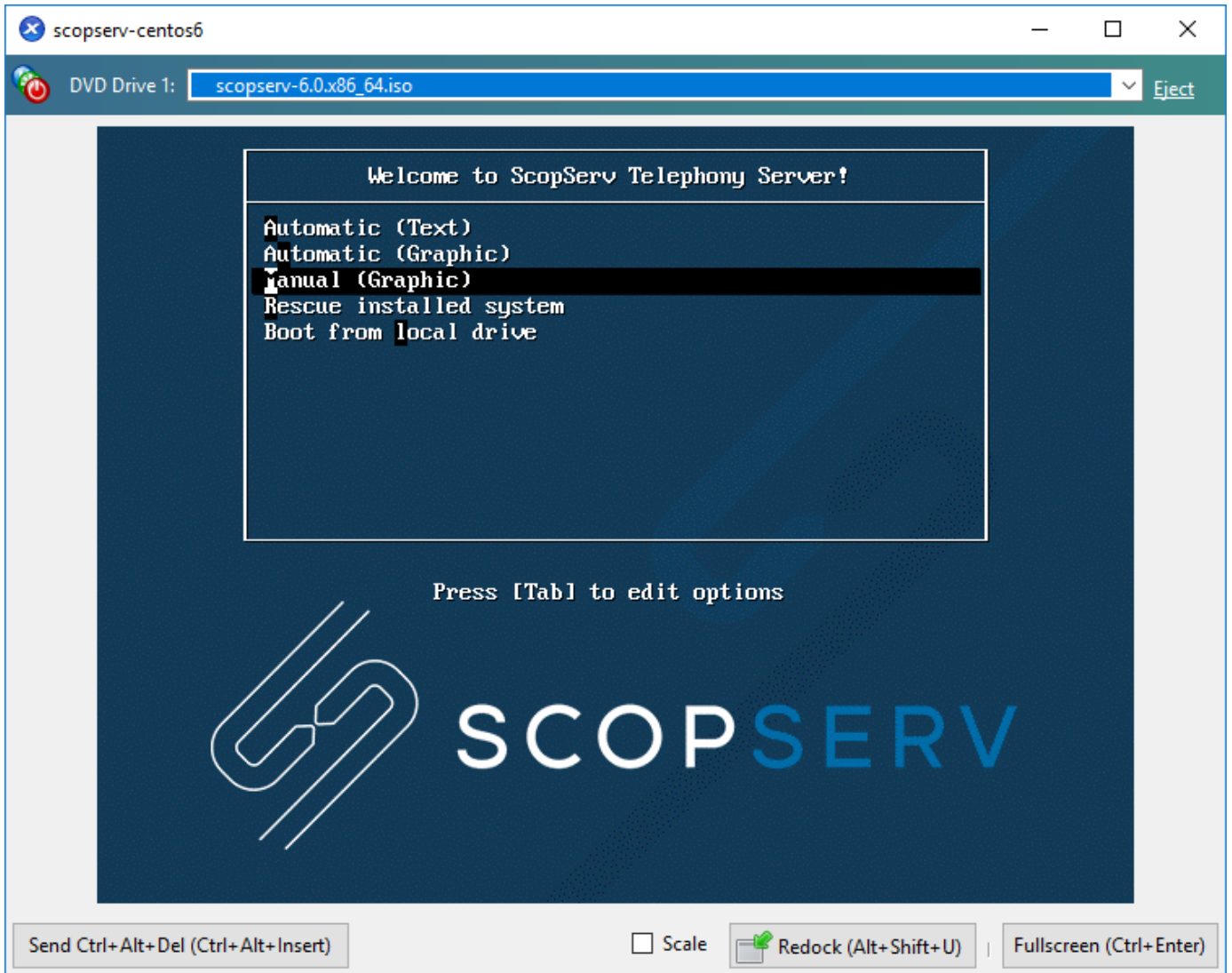
CITRIX

 Copy host BIOS strings to VM

< Previous

Next >

Cancel



BEFORE YOU BEGIN!

Installing from the SCOPTEL C6 installation media will format and destroy all data on your existing drives!

If you are upgrading a previous SCOPTEL distribution you will need to ensure all data is backed up before proceeding.

- Refer to the documentation available at <https://blog.scopserv.com/2012/06/how-to-backup-and-restore-a-SCOPTEL-pbx/>

- The Putty and WinSCP method is the recommended method

Installation Procedure

- Once the ISO file has started booting choose the Manual (Graphic) mode and press Enter

Welcome to ScopServ Telephony Server!

Automatic (Text)
Automatic (Graphic)
Manual (Graphic)
Rescue installed system
Boot from local drive

Press [Tab] to edit options



SCOPSERV

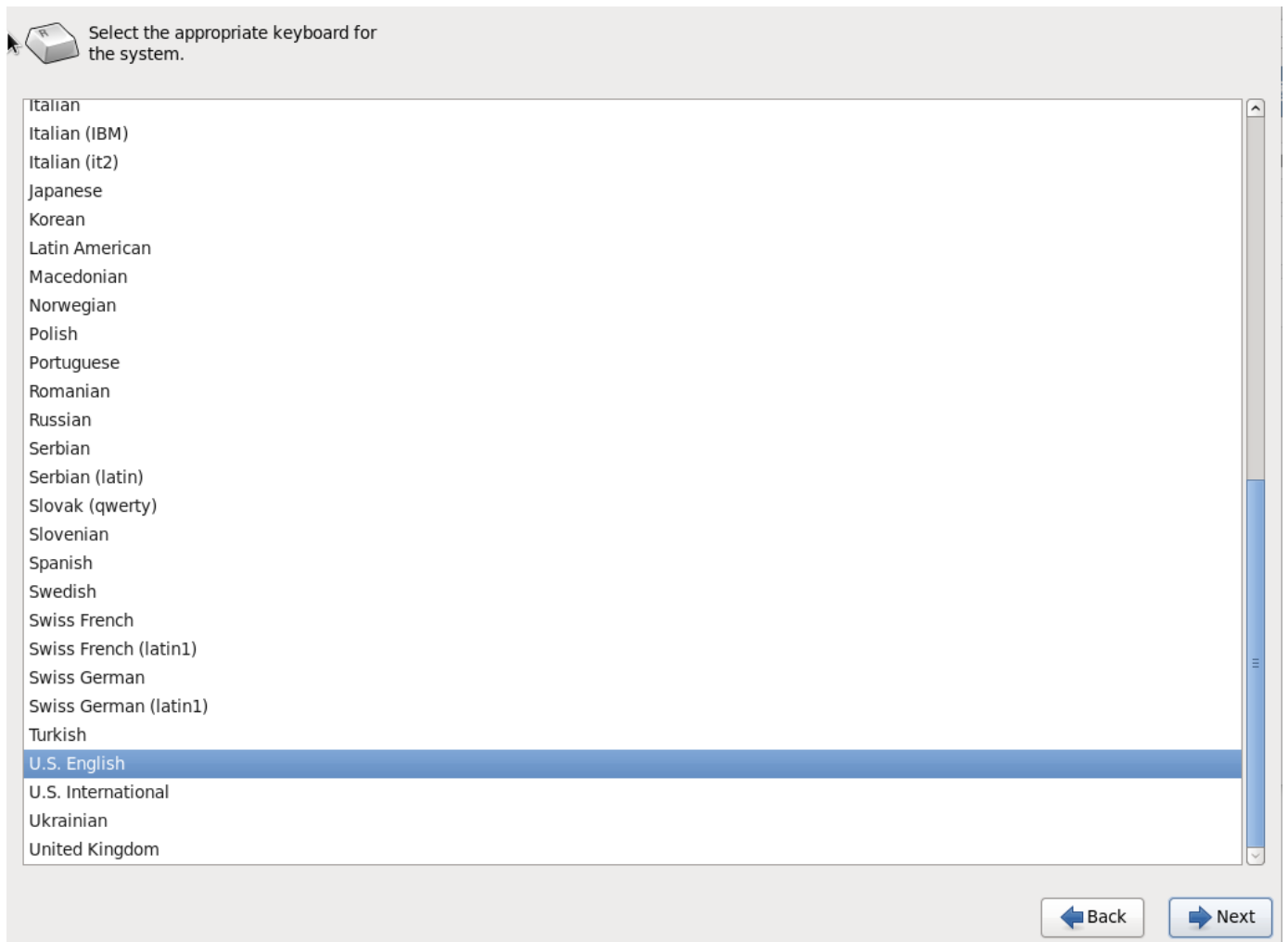
- Click **Next**



← Back

→ Next

- Select your keyboard and click **Next**



- Choose Basic Storage Devices default
- Or choose Specialized Storage Devices if you have customized requirements
- Click **Next**

What type of devices will your installation involve?

Basic Storage Devices

- Installs or upgrades to typical types of storage devices. If you're not sure which option is right for you, this is probably it.

Specialized Storage Devices

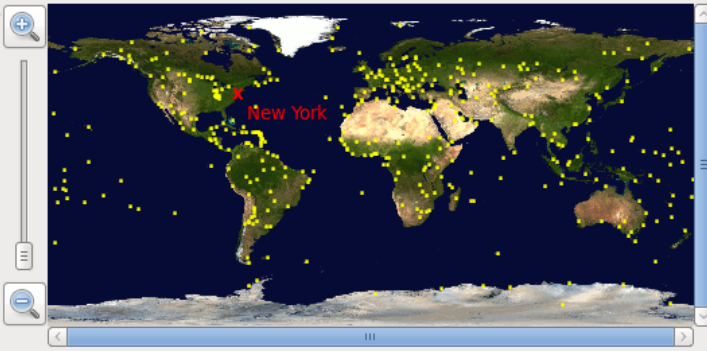
- Installs or upgrades to enterprise devices such as Storage Area Networks (SANs). This option will allow you to add FCoE / iSCSI / zFCP disks and to filter out devices the installer should ignore.

 Back

 Next

- Choose your time zone
- Click **Next**

Please select the nearest city in your time zone:



Selected city: New York, America (Eastern (most areas))

America/New York

System clock uses UTC

← Back

Next →

- Set and confirm the root password
- Click **Next**








The root account is used for administering the system. Enter a password for the root user.

Root Password:

Confirm:

- Choose Replace Existing Linux System(s)
- If you have any custom partition requirements then check the selection to Review and modify partitioning layout
- Click **Next**

Which type of installation would you like?

-  **Use All Space**
Removes all partitions on the selected device(s). This includes partitions created by other operating systems.
Tip: This option will remove data from the selected device(s). Make sure you have backups.
-  **Replace Existing Linux System(s)**
Removes only Linux partitions (created from a previous Linux installation). This does not remove other partitions you may have on your storage device(s) (such as VFAT or FAT32).
Tip: This option will remove data from the selected device(s). Make sure you have backups.
-  **Shrink Current System**
Shrinks existing partitions to create free space for the default layout.
-  **Use Free Space**
Retains your current data and partitions and uses only the unpartitioned space on the selected device(s), assuming you have enough free space available.
-  **Create Custom Layout**
Manually create your own custom layout on the selected device(s) using our partitioning tool.

- Encrypt system
- Review and modify partitioning layout


- This screen is OK to use default values
- Click **Next**


The default installation of ScopServ is a minimum install. You can optionally select a different set of software now.

- Desktop
- Minimal Desktop
- Minimal
- Basic Server
- Database Server
- Web Server
- Virtual Host
- Software Development Workstation

Please select any additional repositories that you want to use for software installation.

ScopServ

 Add additional software repositories

 Modify repository

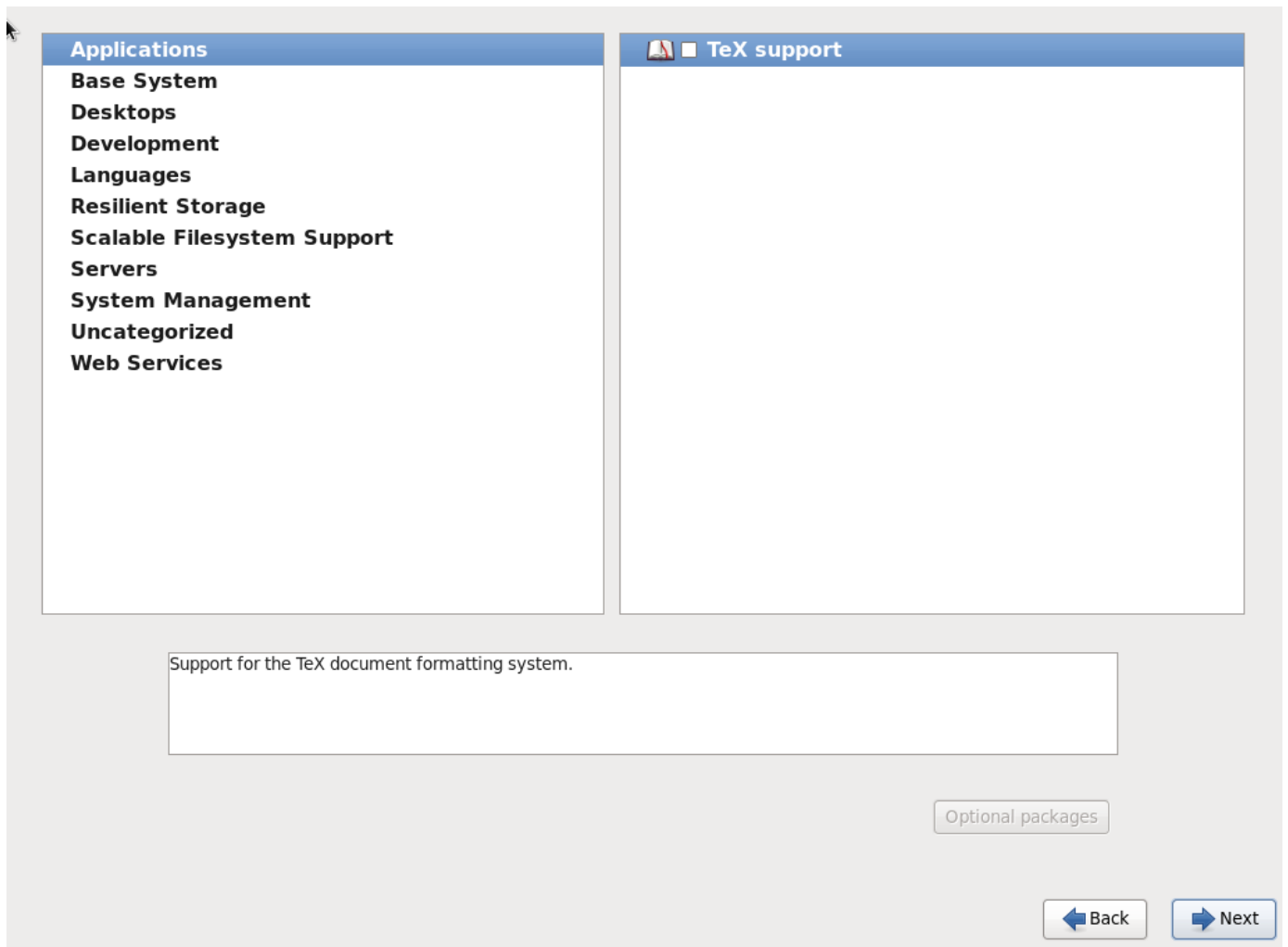
You can further customize the software selection now, or after install via the software management application.

- Customize later
- Customize now

 Back

 Next

- This screen is OK to use default values
- Click **Next**



- Your Operating System and Package installation is complete
- Remove the installation media
- Click on **reboot**



Congratulations, your ScopServ installation is complete.

Please reboot to use the installed system. Note that updates may be available to ensure the proper functioning of your system and installation of these updates is recommended after the reboot.

← Back

Reboot

Post Installation

If you were upgrading an existing CentOS 5 installation: * The SCOPTEL CentOS 6 ISO installs by default version 6.x scopserv-reports and scopserv-realtime packages. * These packages no longer use a text based queue_log file to generate reports as did scopserv-reports and scopserv-realtime release 5 packages.

- You will need to run the queue_log migration script to use new SQL tables required for Automatic Call Distribution reports in SCOPSTATS
- It is recommended that you do this during non peak hours since the migration script can take a long time based on the amount of saved historical data.
- Go to **Tools>Telephony>Reports>Queue Log Migrate** and click on the **Queue Log Migration** button to start the migration script.

Logged as: admin

- ScopServ
- Configuration
 - Server
 - Network
 - Telephony
- ScopSTATS
- Tools
 - Server
 - Network
 - Telephony
 - General
 - Informations
 - Snapshot
 - Dialplan
 - Database
 - Asterisk Log
 - Mass Phone Reboot
 - Voicemail Management
 - LDAP Test
 - SIP ALG Detector
 - Import/Export
- File Manager

Telephony Reports

Command	Description
Queue Log Migrate	Verify all Queue (ACD) SQL tables and migrate data to new format.